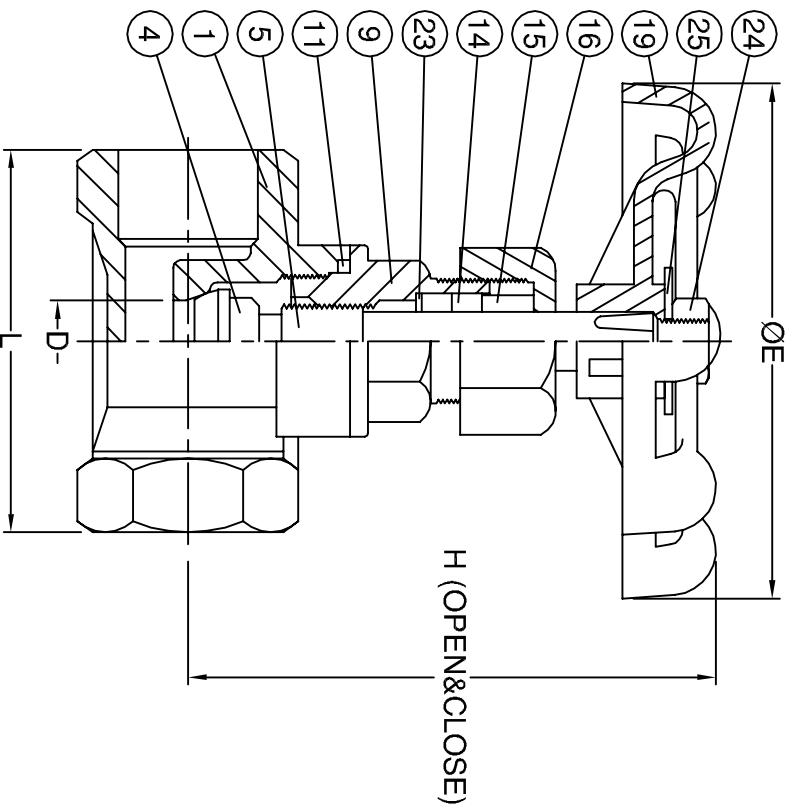


# Fig No: GB-200

## MATERIALS LIST

NO.	PART NAME	MATERIAL
1	BODY	1.4408 / EN1503-1
4	DISC	SS316
5	STEM	SS316
9	BONNET	1.4408 / EN1503-1
11	BODY SEAL	PTFE.
14	STEM PACKING	PTFE.
15	GLAND	SS304
16	GLAND NUT	1.4408 / EN1503-1
19	HANDWHEEL	ADC12
23	WASHER	SS316
24	H.W. NUT	SS304
25	NAME PLATE	ALUMINIUM



## DIMENSIONS

SIZE	L	ØE	H <sup>(OPEN)</sup>	H <sup>(CLOSE)</sup>	D
DN8	1/4"	52	70	79	73
DN10	3/8"	52	70	79	73
DN15	1/2"	52	70	79	73
DN20	3/4"	60	70	94	85
DN25	1"	72	80	101	91
DN32	1-1/4"	81	80	119	103
DN40	1-1/2"	90	90	142	124
DN50	2"	101	100	159	139

unit:mm

CODE	S-008	APPROVED BY.	CHECK BY.	DRAWN BY.	DRAWING NO.	MATERIAL	UNIT	DESCRIPTION
MODENTIC INDUSTRIAL CORPORATION	SIGN	PRESTON	SHANA	POOLER	GB-200-S008	MATERIALS LIST	mm	STAINLESS STEEL GLOBE VALVE, THREADED END, PN 16
	DATE	12/19/2007	12/19/2007	12/19/2007	REVISION	01	SCALE	

1	2	3	4	5	6	F	E	D	C	B	A
---	---	---	---	---	---	---	---	---	---	---	---