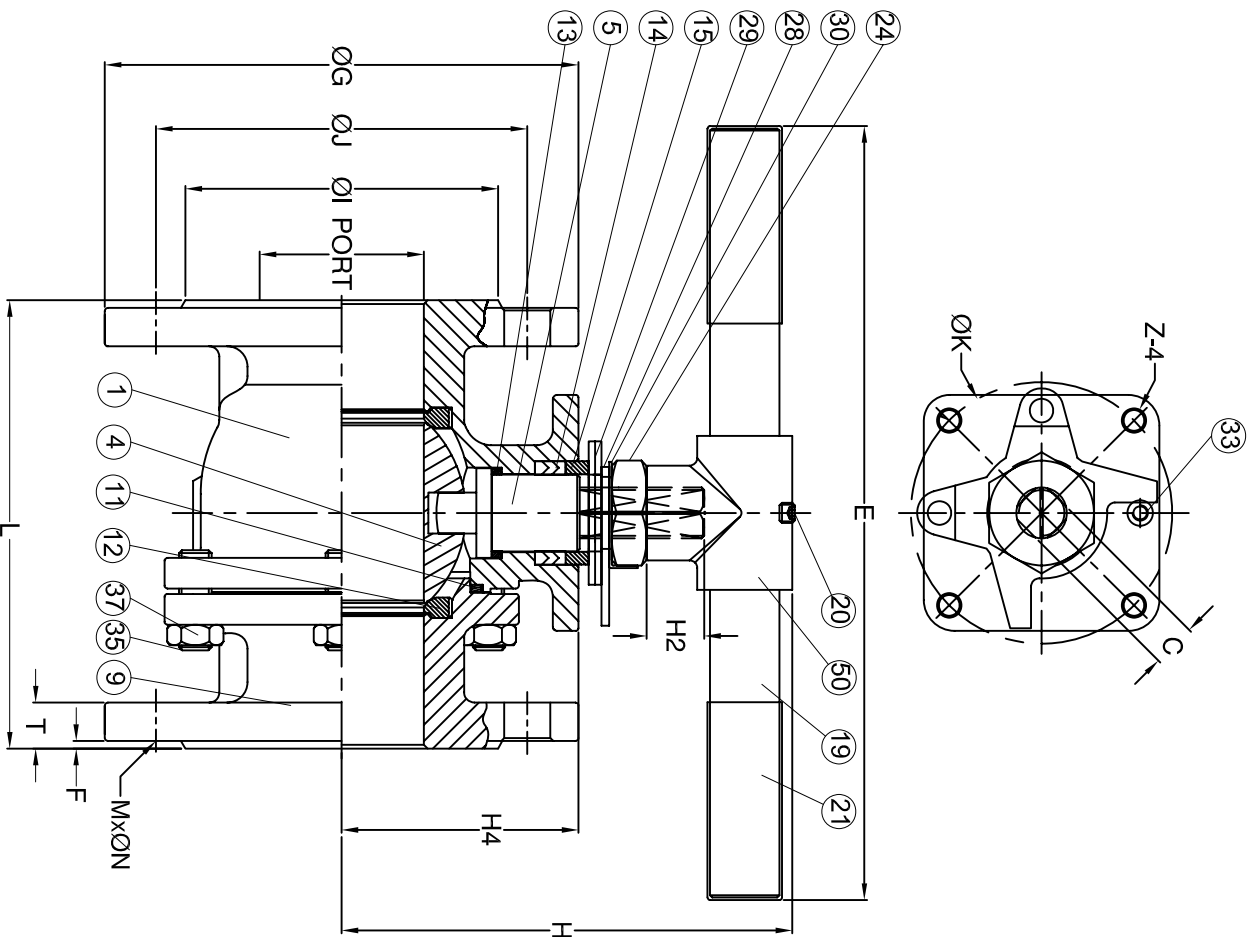


Fig No: MD-27



MATERIALS LIST

NO.	PART NAME	MATERIAL
1	BODY	1.4408 / EN 1503-1
4	BALL	CF8M / EN 1503-2
5	STEM	SS316
9	END CAP	1.4408 / EN 1503-1
11	BODY SEAL	PTFE.
12	SEAT	R1FE.
13	THRUST WASHER	PTFE.
14	STEM PACKING	PTFE.
15	GLAND BUSH	SS304
19	HANDLE	STEEL
20	SET BOLT	SS304
21	HANDLE COVER	PLASTIC
24	HANDLE NUT	SS304
28	STOP PLATE	SS304
29	BELLEVILLE WASHER	SS301
30	TAB WASHER	SS304
33	STOP PIN	SS304
35	BODY BOLT	ASTM A193 Gr.B8
37	BOLT NUT	ASTM A194 Gr.8
50	HANDLE ADAPTER	ASTM A351 Gr.CF8

FLANG DIMENSION: EN 1092-1
FACE TO FACE: EN 558-1

DIMENSIONS

SIZE	PORT	L	E	H	H2	H4	C	ØG	ØU	ØI	T	F	M	ØN	ØK	Z	
DN65	2-1/2"	64.0	170.0	300.0	176.8	23.0	92.5	17.0	185.0	145.0	122.0	18.0	2.0	4	18.0	102.0	M10*1.5P
DN80	3"	76.0	180.0	300.0	186.0	23.0	101.7	17.0	200.0	160.0	138.0	20.0	2.0	8	18.0	102.0	M10*1.5P
DN100	4"	100.0	190.0	450.0	200.9	23.0	119.0	17.0	220.0	180.0	158.0	20.0	2.0	8	18.0	102.0	M10*1.5P

unit:mm

CODE	P-005	APPROVED BY.	CHECK BY.	DRAWN BY.	DRAWINGNO.	MATERIAL	UNIT	DESCRIPTION
INDUSTRIAL CORPORATION	MODENTIC	POOLER	SHANA	PRESTON	MD-27-P005	MATERIALS LIST	mm	TWO PIECE BALL VALVE, FLANGED END, FULL BORE, PN 16



F E D C B A